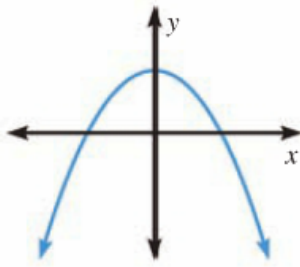


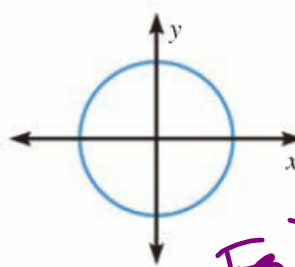
Decide if the following represent a function.

a.



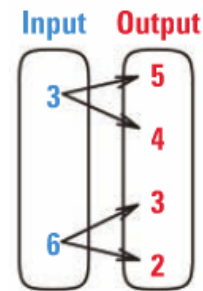
Yes, VLT

b.



No, Fail
VLT

c.



NO $6 \rightarrow 3$
 $6 \rightarrow 2$

d. Evaluate the function $f(x) = -5x - 2$ when $x = 4$ and $x = 0$

$$f(4) = -5(4) - 2$$

$$= -20 - 2$$

$$f(4) = -22 \quad (4, -22)$$

$$f(0) = -5(0) - 2$$

$$f(0) = -2$$

$$(0, -2)$$

Homework Questions?

On the top of your paper (by your name) rate yourself for this section:

4 - I can summarize the concepts and explain it to others

3 - I can apply the concept to answer questions correctly

2 - I can apply the concepts but with some mistakes

1 - I need help and know how to apply the concept

0 - I can't apply the concept, even with help

Rating of 0-2 is a warning signal to me that you need help

4.8 Functions and Relations Continued

Goals: • Decide whether a relation is a function and use function notation.

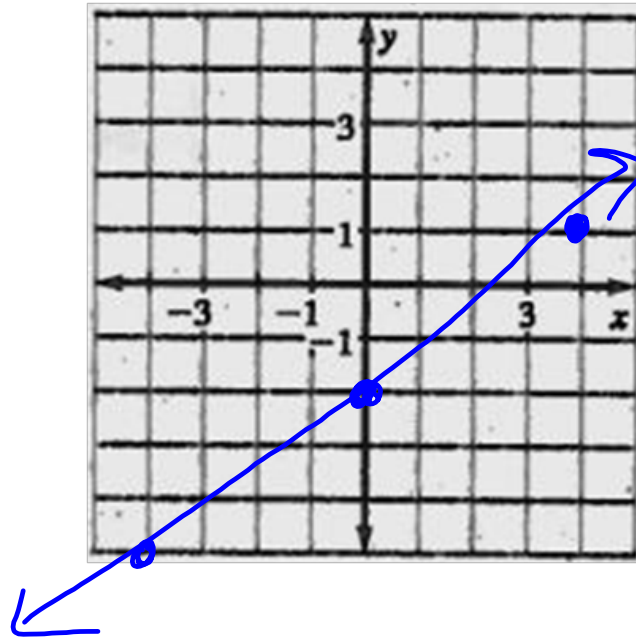
EQ: How do you graph a linear function?

Example 4: Graph a Linear FunctionGraph $f(x) = \frac{3}{4}x - 2$

$$y = \frac{3}{4}x - 2$$

$$m = \frac{3}{4}$$

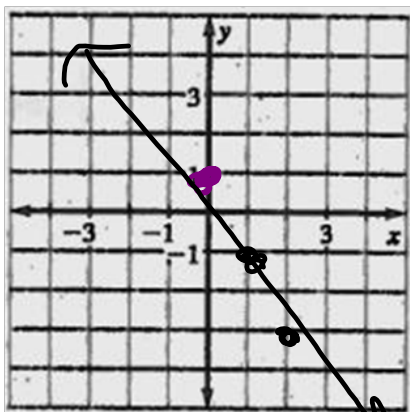
$$b = -2$$

**Try It** Graph the linear function.

7. $f(x) = -2x + 1$

$$y = -2x + 1$$

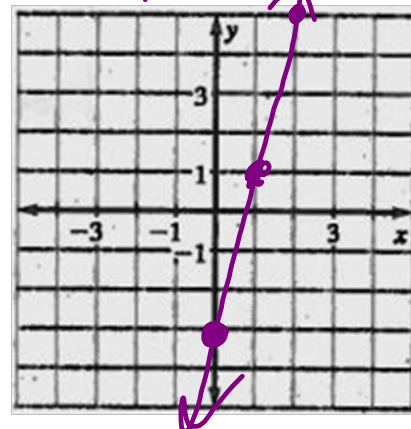
$$m = \frac{-2}{1} \quad b = 1$$



8. $f(x) = 4x - 3$

$$y = 4x - 3$$

$$m = \frac{4}{1} \quad b = -3$$



Find the slope.

$$f(3) = 5, f(2) = -1$$

$$(3, 5)$$

$$(2, -1)$$

$$m = \frac{5 - (-1)}{3 - 2} = \frac{6}{1}$$

$$m = 6$$

$$f(2) = 6, f(5) = 6$$

$$(2, 6)$$

$$(5, 6)$$

$$m = \frac{6 - 6}{2 - 5}$$

$$m = \frac{0}{-3}$$

$$m = 0$$

$$f(-1) = 4, f(8) = -3$$

$$(-1, 4)$$

$$(8, -3)$$

$$m = \frac{4 - (-3)}{-1 - 8} = \frac{7}{-9}$$

$$m = -\frac{7}{9}$$

$$f(4) = 2, f(7) = 1$$

$$(4, 2)$$

$$(7, 1)$$

$$m = \frac{2 - 1}{4 - 7} = \frac{1}{-3}$$

$$m = -\frac{1}{3}$$

Summary

EQ: How do you graph a linear function?

4.8 Day 2 Homework

p.255 #37-42

Thank You Cards (Need to do 2)

1) Staff member - Teacher, Custodian, Cook, etc.

2) Adult of Your Choice

(Family Member, Neighbor, Coach)

***Need at least 3 sentences**

***Their Name** on Front or Top of Letter

***Must sign First & Last name @** end of letter